

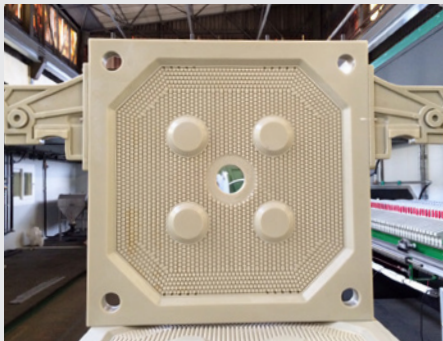
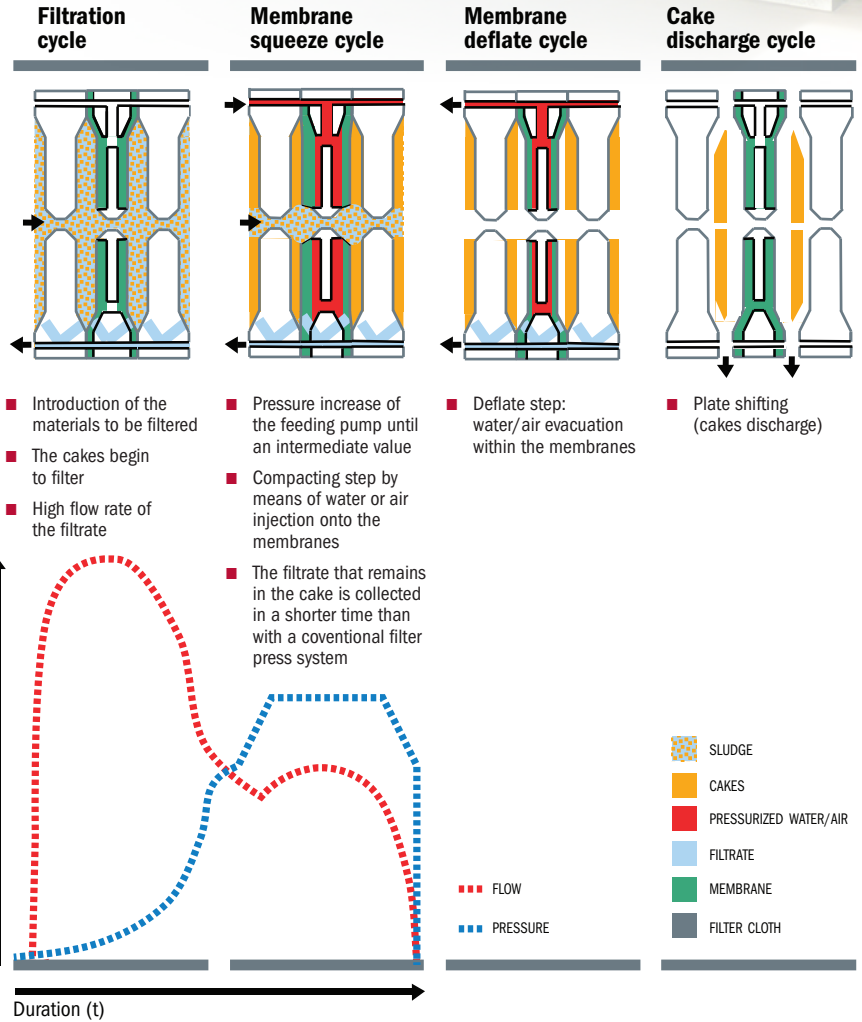


**140 YEARS OF  
EXPERIENCE**

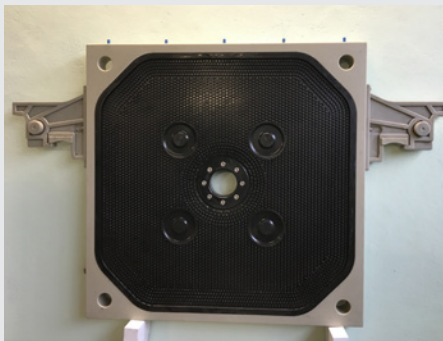
**FULL** **AUTO**  
FILTER PRESS

 ***Fournier***

## Membrane filter press operating principles



**Recessed plate**



**Membrane plate**



**Plate with cloth**

DESCRIPTION	PLATES SIZES (INCHES/MM)	MAX NBR OF PLATES	MAX FILTERING SURFACE (FT <sup>2</sup> /M <sup>2</sup> )
207	10 x 10 / 250 x 250	10	9,15 / 0,85
212	20 x 20 / 500 x 500	50	226 / 21
211	24 x 24 / 630 x 630	70	505 / 47
217	32 x 32 / 800 x 800	110	1152 / 107
218	40 x 40 / 1000 x 1000	125	2206 / 205
219	47 x 47 / 1200 x 1200	140	3498 / 325
219-B	51 x 51 / 1300 x 1300	145	4144 / 385
220	59 x 59 / 1500 x 1500	160	6351 / 590
220-B	59 x 79 / 1500 x 2000	170	9041 / 840
226	79 x 79 / 2000 x 2000	180	12 271 / 1140

# FULLAUTO

FILTER PRESS



## FACTS

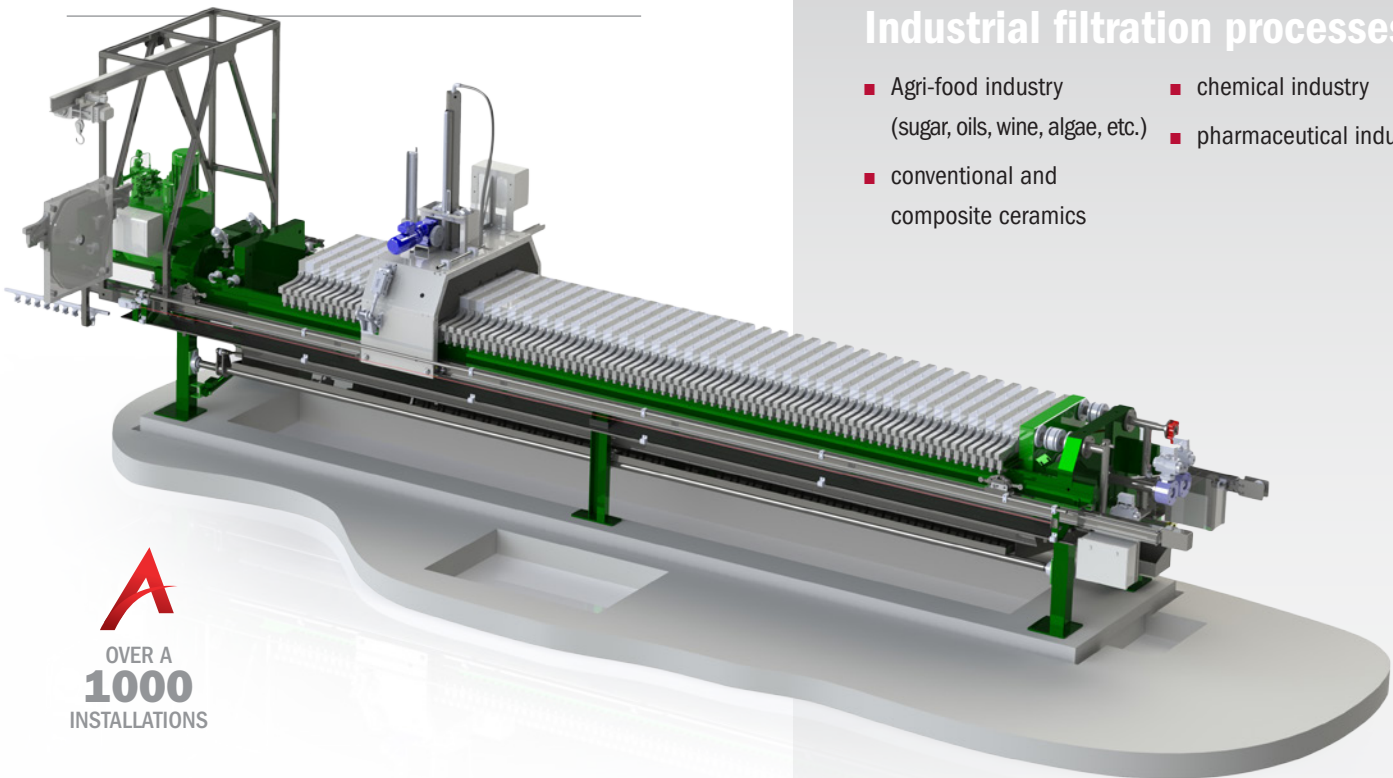
**Runs 24h/7 without operator intervention**

**Integration into continuous automatic processes**

**Simple, robust and reliable**

**High performance cake dryness**

**Municipal & Industrial applications**



**A**  
OVER A  
**1000**  
INSTALLATIONS

## AREAS OF APPLICATION

**Dewatering of sludges from:**

**Municipal sludges, drinking water plants, industrial slurry**

- Aggressive media

**Industrial effluent**

- Agri-food industry
- Mines and quarries
- Hydrometallurgy
- Surface treatment
- Exhaust gas scrubbing
- Chemicals and pigments
- etc.

**Industrial filtration processes**

- Agri-food industry (sugar, oils, wine, algae, etc.)
- conventional and composite ceramics
- chemical industry
- pharmaceutical industry



## THE UNIQUE AND FULLY AUTOMATIC ROBOT



The Robot takes care of:

### Plate weighing

For sticky material, plates are automatically weighed during the cake discharge cycle. A plate over weight detection will generate a shaking cycle.

### Automatic Core Blower

Robot may also be equipped with a core cleaning mechanism.

### Plate shaking

Plates will be shaken automatically if required by the nature of the sludge or by the command of the plate weighing device.

### Automatic wash

Robot can be equipped with a mobile wash manifold to be used with high pressure water or in some specific applications, acid solution.



«This simple and inexpensive solution leaves the cloths untouched and ensures that they remain intact.»

# PROCESS COMPONENTS



## Filter press peripherals

The following units can be offered as an option to produce a turn key plant operation: conveyors, transfer pumps, dosage pumps, agitators, flocculation tank, settlement tank, reactor, etc.



## Cake collection

- Direct drop can be used or conveyors can be supplied to accommodate customer needs.



## Protection of personnel

- Light curtains, pull cords and barriers which comply with UL, CSA or other regulations can be provided.

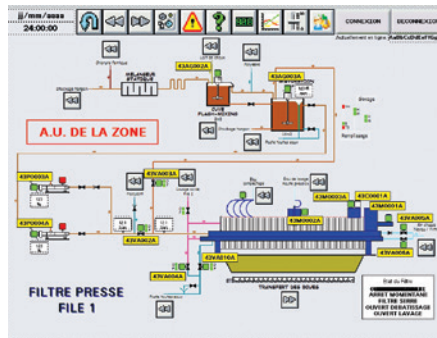


## High-pressure cloth washing

- For a larger size press and for automation purposes, a booster pump can be supplied.

## Acid washing

- Acid dilution and feeding system can be supplied when needed by the application.



## Electrical control cabinets

- Operator interface allowing friendly operation and control provided with PLC as per the customer requirements.



## Cake discharge

- **100% automatic:** the device for shaking the plates is connected to a weighing system which ensures that the cakes are discharged without operator intervention.
- Anti-corrosion mechanized cake discharge: this accurate and reliable device enables the chambers to open without operator intervention. The stainless steel material ensures that they remain in perfect condition over time.



Technology partnership



Ask us about  
our Pilot unit...  
Or Lab analysis



Your local representative

FOURNIER INDUSTRIES INC.

3787 West Frontenac Blvd., Thetford Mines  
Quebec, Canada G6H 2B5

Phone: 418 423-4241

[www.filter-press.ca](http://www.filter-press.ca)

[www.rotary-press.com](http://www.rotary-press.com)

[www.fournierindustries.com](http://www.fournierindustries.com)

